

MONTHLY MEMBERSHIP PROGRESS REPORT

District 318 C

Results as of: 8/31/2024

GMT:

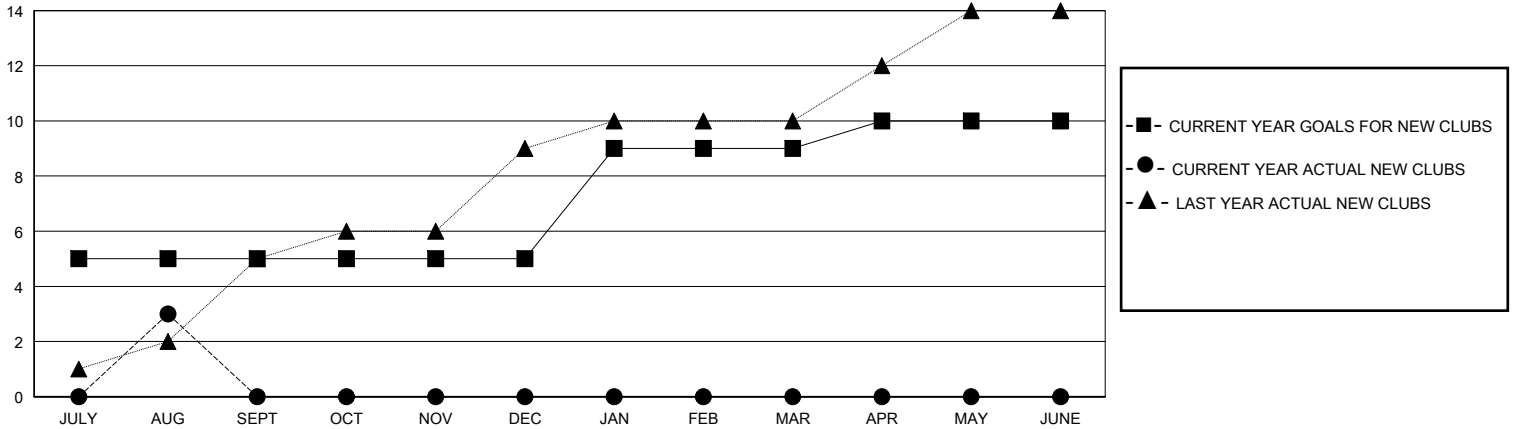
LOCATION INDIA

GMT CA

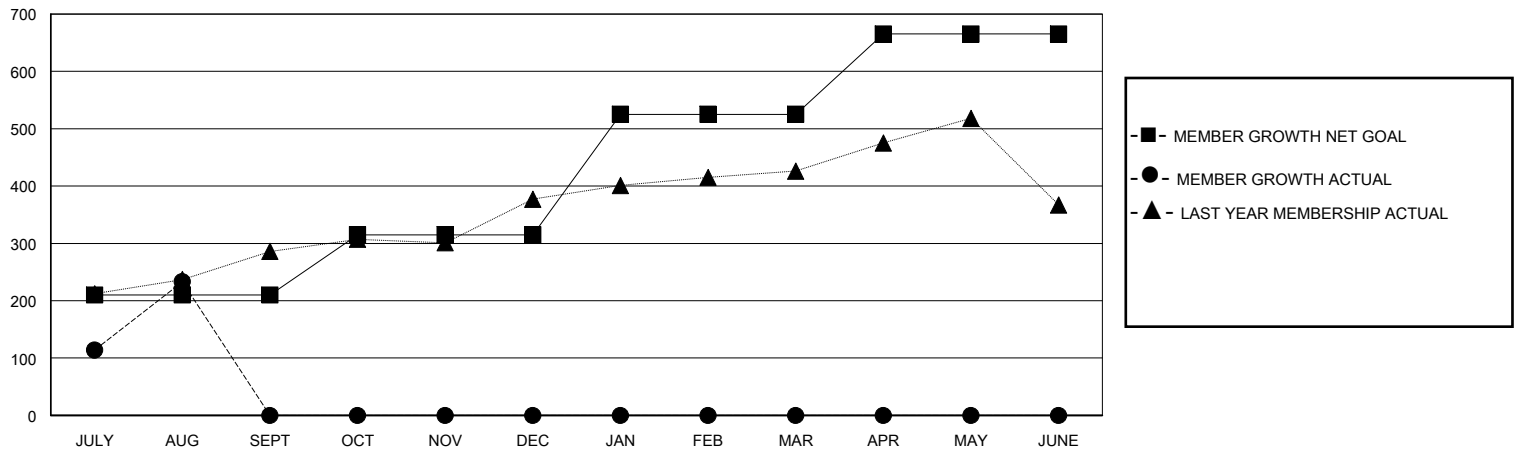
Clubs			
RESULTS FOR 2024-2025			
QUARTER	NEW CLUB GOAL	NEW CLUBS	DROPPED CLUBS
JULY/AUG/SEPT	5	3	1
OCT/NOV/DEC	0	0	0
JAN/FEB/MAR	4	0	0
APR/MAY/JUNE	1	0	0

Members			
RESULTS FOR 2024-2025			
QUARTER	MEMBER GROWTH NET GOAL	MEMBER GROWTH ACTUAL	DROPPED MEMBERS ACTUAL (including transfers)
JULY/AUG/SEPT	210	286	49
OCT/NOV/DEC	105	0	0
JAN/FEB/MAR	210	0	0
APR/MAY/JUNE	140	0	0

GOALS AND ACTUAL NEW CLUBS CUMULATIVE



GOALS AND ACTUAL MEMBERS CUMULATIVE



DROPPED CLUBS: 1	53 CLUBS OF 165 ADDED 1 OR MORE NEW MEMBERS	GENDER DISTRIBUTION MALE 4,825 (86.52%) FEMALE 752 (13.48%)
DROPPED MEMBERS DECEASED 5 CLUB CANCELLED 0 OTHER 44 TOTAL 49	CLICK HERE FOR CUMULATIVE MEMBERSHIP DATA	TOTAL FAMILY UNIT MEMBERS 1,258 FAMILY MEMBERS PAYING HALF DUES 666